

**ATLANTIS™**

For all major  
implant systems

A removable prosthesis with  
the comfort of a fixed restoration

ATLANTIS™ Conus concept



**DENTSPLY**  
IMPLANTS



**ATLANTIS™ Conus concept offers several advantages for the patients:**

- A stable but removable solution that offers the comfort of a fixed restoration
- Easy to clean
- Optimal chewing function and sense of taste (due to free palate option)
- Desirable phonetic function and esthetic result
- A cost-effective solution

# A stable and comfortable solution for edentulous patients

As part of the digital solutions offering from DENTSPLY Implants, ATLANTIS Conus concept is available for all major implant systems.

With the ATLANTIS Conus concept patients will receive a unique cost-effective, friction-retained, non-resilient, prosthetic solution, which will provide them with renewed comfort and confidence.

This implant-supported solution helps to eliminate problems often associated with dentures, such as pain of pressure of ill-fitting dentures and atrophy as a result of inactivity or pressure requiring relining of existing denture.

The ATLANTIS Conus concept makes it easy and convenient to provide an excellent foundation for optimal function and esthetics using your preferred implant systems.



# ATLANTIS™ Conus concept

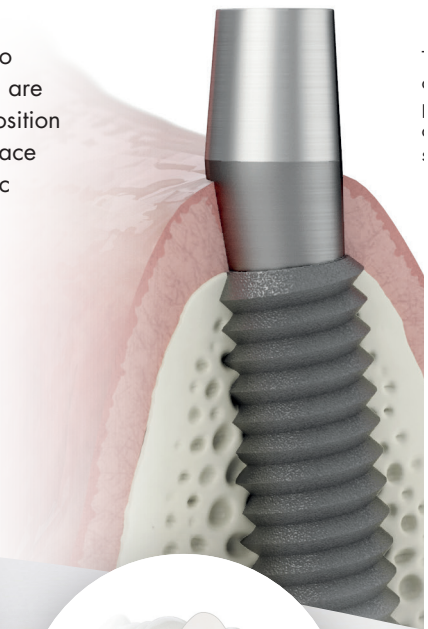
A patient-specific solution that saves time and increases profitability.

ATLANTIS Conus concept allows you to provide fully edentulous patients with a cost-effective, implant-supported prosthesis. This solution has the stability of a friction-retained, non-resilient prostheses, but the comfort of a fixed restoration.

The concept is composed of patient-specific ATLANTIS Conus abutments together with prefabricated SynCone caps. The friction-retained SynCone caps are part of the SynCone concept, a proven solution that has been used since 2001. The ATLANTIS Conus abutments are individually designed by DENTSPLY Implants using the patented ATLANTIS VAD (Virtual Abutment Design) software.

This ensures that all abutments are parallel to each other, and that their restorative margin are as close to the soft tissue as possible. The position of the abutments will be in relation to the space needed for the final restoration. A diagnostic tooth set-up is always required.

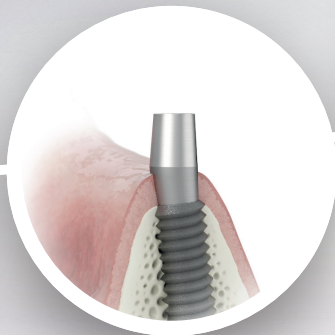
The ATLANTIS Conus concept enhances practice profitability by eliminating the need for design, manual adjustment and investment in prefabricated abutments.



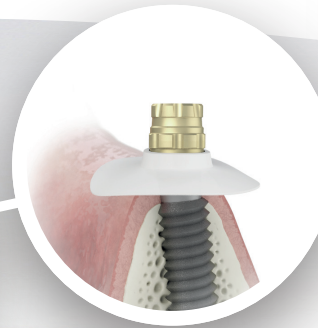
## Easy step-by-step restorative procedure



1. The ATLANTIS Conus Abutment is ordered by the dental laboratory in ATLANTIS WebOrder and review and approve abutment design before production



2. Install abutment and suture soft tissue around the base



3. Attach the caps, mounted chairside or on the model, utilizing friction-fit retention



4. Introduce polymer compound around the cap

The ATLANTIS Conus concept consists of a stable, friction-fit prosthetic connection between a conical abutment and a cap that serve as retaining elements.



**ATLANTIS™ Conus Abutment – overdenture**  
a patient-specific abutment designed to fit SynCone caps.



**Taper Caps Degulor for SynCone®**  
are prefabricated and available with and without retention for the denture.



5. Insert the prosthesis after polymer has cured

### Comparison with other retention systems

	Ball	Locator	ATLANTIS Conus concept
Hygiene maintenance	Easy	Easy	Easy
Resilient/Soft tissue pressure	Yes	Yes	No
Replacement of retention elements	Complicated	Easy	Not required as virtually wear-free
Compensation of angular placed implants	Slight correction of non-parallel implants possible	Slight correction of non-parallel implants possible	Possible to angulate abutments up to 30 degrees

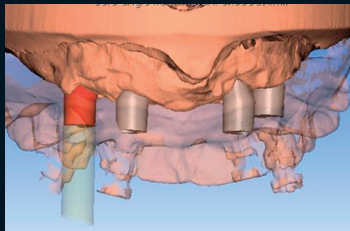
# Clinical cases

Examples of fixed prostheses with removable capability.

## ATLANTIS Conus concept on four implants

This 54-year-old female patient was complaining of difficulty eating and chronic sores arising from a 22-year-old complete upper denture. ATLANTIS Conus solution was selected for surgical and restorative simplicity considerations. It was also a cost-effective treatment for satisfying the patient's

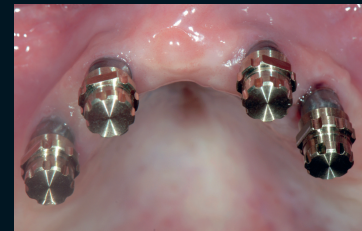
requirements for stability, restored function and esthetics, and easy hygiene maintenance. This was a long-term, temporary solution based on the patient's existing denture, requiring no new supporting framework.



ATLANTIS Conus Abutments are designed parallel using ATLANTIS VAD (Virtual Abutment Design).



ATLANTIS Conus Abutments are inserted.



SynCone caps, with retention, are in place.



SynCone polymerization sleeves help prevent cold-cured polymer coming between the cap and abutment.



The patient's existing prosthesis is prepared for fitting to SynCone caps and is inserted.



The final result.

*Courtesy of Arnold Rosen, DDS, MBA  
Prosthodontist/Private practice, Boston, MA*

### ATLANTIS Conus concept on six implants

This 72-year-old patient was complaining of an uncomfortable denture and requested an esthetic and fixed restoration with easy hygiene maintenance. After extracting seven teeth, the patient was provided with an immediate denture. After a healing period

a removable ATLANTIS Conus restoration on six implants, was produced and inserted. This permanent solution was supported by a metal framework.



Healing abutments in place after the second stage of surgery.



SynCone caps placed on the abutments.



Cobalt-chrome framework on the model with abutments and caps.



Intraoral fixation of the caps cemented with dual-hardening cement to the cobalt-chrome framework.



The removable bridge was finalized and polished in the laboratory.



The final result.

*Courtesy of Claudia Mrosek, Dentist, Folkandvården Södra Ryd Skövde, Sweden  
Christian Schaefer, Maxiofacial surgent MD, MDDS, Institute of Odontology, University of Gothenburg, Sweden  
Jan Stöckel, CDT, Mariestads Dental, Mariestad, Sweden*

#### **About DENTSPLY Implants**

DENTSPLY Implants offers comprehensive solutions for all phases of implant therapy, including ANKYLOS®, ASTRA TECH Implant System™ and XiVE® implant lines, digital technologies, such as ATLANTIS™ patient-specific CAD/CAM solutions and SIMPLANT® guided surgery, SYMBIOS® regenerative solutions, and professional development programs. DENTSPLY Implants creates value for dental professionals and allows for predictable and lasting implant treatment outcomes, resulting in enhanced quality of life for patients.

#### **About DENTSPLY International**

DENTSPLY International Inc. is a leading manufacturer and distributor of dental and other healthcare products. For over 110 years, DENTSPLY's commitment to innovation and professional collaboration has enhanced its portfolio of branded consumables and small equipment. Headquartered in the United States, the Company has global operations with sales in more than 120 countries.

[www.dentsplyimplants.com](http://www.dentsplyimplants.com)

