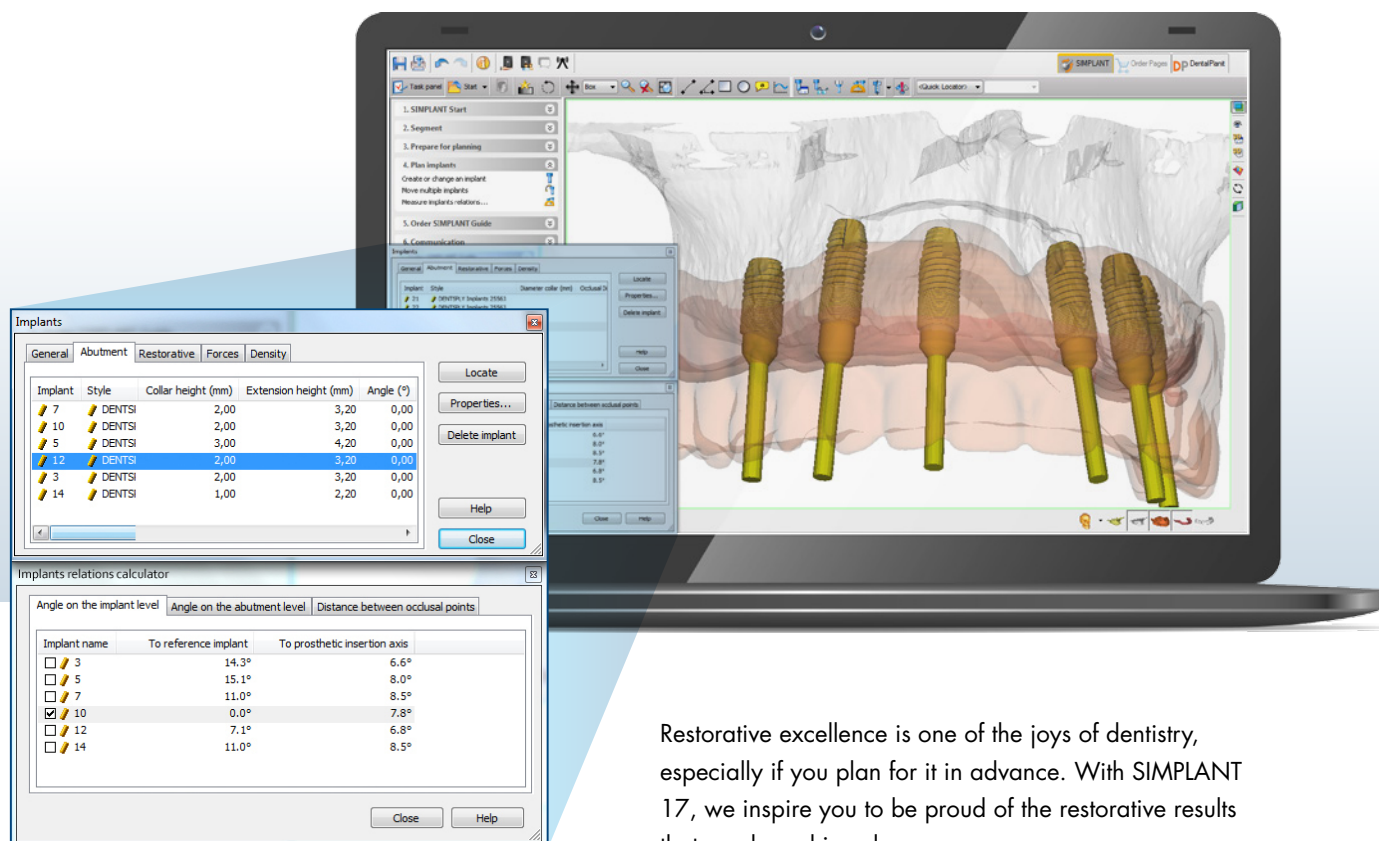


SIMPLANT®

Introducing SIMPLANT® 17

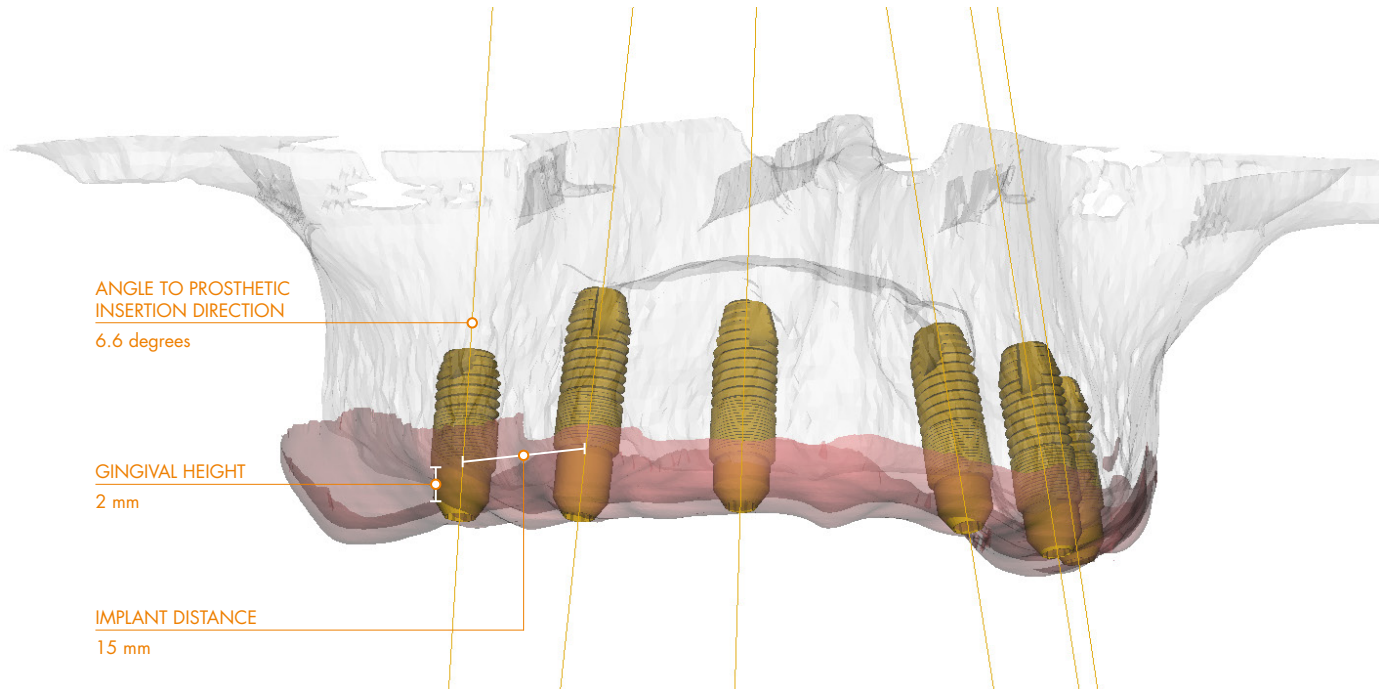
This is how easy it is to plan for optimal implant prosthetics



Restorative excellence is one of the joys of dentistry, especially if you plan for it in advance. With SIMPLANT 17, we inspire you to be proud of the restorative results that can be achieved.

For easier prosthetic optimization and alignment of the implant treatment, the SIMPLANT 17 implant relations calculator shows important planned implant relations, such as the distances between implants, implant vertical heights and implant inclination compared to the desired insertion direction. Multiple implants can be moved and rotated as a group, making it easy to plan according to your design preferences.

With the custom-made SIMPLANT Guide built from the optimized prosthetic plan, it's a small step towards placing implants with an even and sufficient spread and with optimal insertion parallelism.



Adequate spacing to allow for soft tissue health

Multiple implants can be moved or rotated as a group, making it easy to maintain ideal implant relations.

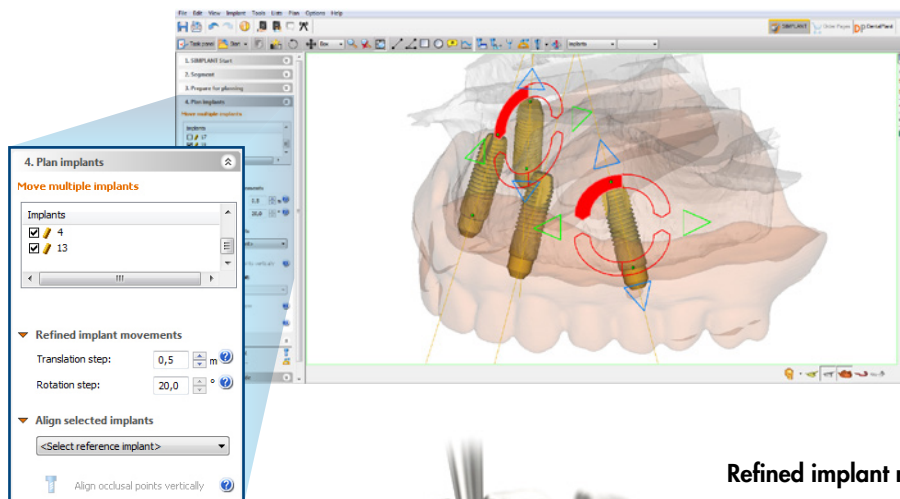
Clear communication

The prosthetic needs, for example custom or stock abutments, can be communicated to the whole team via improved case sharing with the SIMPLANT Team-Up! app.



Simplified restorative procedure

When multiple implants can be aligned, it becomes easier to place restorative components, such as abutments or a screw-retained restoration.



Avoiding the need for bone augmentation

Multiple implants can be rotated as a group, making it easy to avoid the need for sinus floor elevation in the maxilla or nerve transposition in the atrophic mandible.

Refined implant movements

This helps you decide to work on straight or angled abutments when requesting a suprastructure from the dental laboratory. When selecting ATLANTIS ISUS, the angulated screw access channel can be used to correct the prosthetic screw access channel up to 30 degrees.

